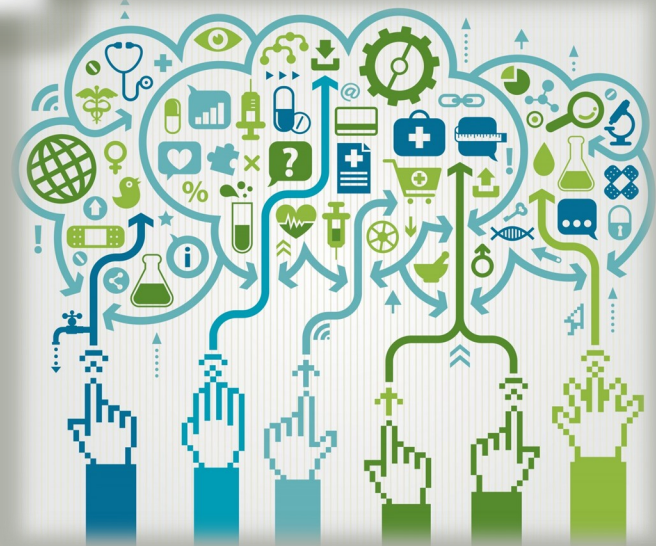


THREE YEAR STRATEGIC PLAN 2020-2023



Vision Statement

The Kent Association of Local Councils will represent the interests of its members at County and National level. We will communicate effectively with our member Local Councils in Kent and strive to provide them with the best support, legal advice, guidance and training to help them develop their members' skills and knowledge to deliver quality services to their communities. We will work to promote the relationship of Local Councils with the Principal Authorities that recognises the important contribution made by Local Councils to their communities as the first tier of Local Government.

Serving Kent and Medway

Foreword

Whilst the next three years will bring its challenges in a fast-changing environment, particularly as we move to a “new normal” post Covid-19, there are also exciting opportunities. We are aware of the need to continue to provide efficient and effective member services, at the same time of providing value for money, and to embrace the digital age and make our services more accessible to all Member Councils. KALC is already considered to be one of the most effective County Associations in the country. We are committed to securing successful outcomes on behalf of our Member Councils, whilst rising to the challenges that lay ahead.

Place - continued focus on our vision to help enable all our Member Councils to deliver quality services to Kent’s communities and contribute to a high quality of life and a sustainable future.

Prosperity - to promote the growing and important role that Local Councils provide to their communities across Kent and to promote the importance of working in partnership with all tiers of local government and with community organisations to deliver better outcomes so that Kent prospers.

People – to provide the best support, legal advice, guidance and training to help our Member Councils develop their Members’ and Officers’ skills and knowledge to deliver quality services to their communities, where people can live happily and healthily in an environment that the Community is proud to be a member.

Performance – to continue to deliver effective and efficient services for our Member Councils.

In this strategy we set out our priorities for each of these themes over the coming 3 years which, in turn, will inform our Annual Action Plan.



Our responsibilities

KALC has a key role to play in supporting our Member Councils in being compliant with national, county and local requirements placed on them, and helping them ensure they are fit for purpose, resilient, and sustainable. KALC and NALC also has a key role in promoting the importance of the sector, encouraging greater partnership working between Local Councils and also with the other tiers of Local Government and other organisations, and in encouraging and providing training opportunities for Councillors and Clerks.

Managing Our Finances

Our Member Councils receive a comprehensive range of services from both KALC and our National Association (NALC).

We regularly review our services and processes to ensure that they continue to offer value for money through our Finance & General Purposes Sub-Committee and the Executive Committee. This is underpinned by our biennial Survey to all Member Councils seeking their views on KALC services and value for money.



Place

Objective

We want to help make Kent an even better place to live by supporting our Member Councils on planning, transport, health & wellbeing and partnership working, which contribute to quality of life and a sustainable future.

Priorities

Planning – We will lobby Government to ensure that the planning system is fit for purpose and takes on board the views of our Member Councils and their local communities,

Transport – we will work with Kent County Council to obtain a Government commitment to introduce measures to restrict HGVs to areas where they have legitimate business, and to introduce legislation and corresponding enforcement to restrict them to roads allowing them access for this purpose.

Health & Wellbeing – We will represent all our Member Councils on the Kent & Medway Joint Health & Wellbeing Board, provide a strategic overview for Member Councils on the health & wellbeing agenda and provide tangible examples of good practice and relevant learning & development opportunities.

Partnership Working – We will encourage and provide support to KALC Area Committees in promoting and developing partnership working between the Area Committee and its Member Councils and the District/Borough/City/Unitary Council.

Prosperity

Objective

We will support and promote the growing and important role that Local Councils provide to their communities across Kent and will encourage the creation of Local Councils in unparished areas.

Priorities

We will work closely with all our Member Councils and Area Committees in any proposals for Local Government Reorganisation and / or devolution discussions within Kent and support and promote partnership working across all tiers of Local Government.

We will work with partners to support our Member Councils in maintaining and enhancing the delivery of local services.

We will work with our partners and our Member Councils to protect the environment and help tackle air pollution and carbon emissions which impact on air quality and climate change.

People

Objective

We will help our member councils to develop communities where people can live happily and healthily.

Priorities

We will provide exemplar support, legal advice, guidance and training to help our Member Councils develop their Members' and Officers' skills and knowledge to deliver quality services to their communities.

We will work with our Partners and Member Councils to improve the health & wellbeing of our communities.

We will work with our Partners and Member Councils to ensure that Kent's communities are better connected.

Performance

Objective

We will deliver effective and efficient services better and faster.

Priorities

We will provide excellent customer service delivery.

We will improve access to information through the use of technology.

We will undertake a biennial survey of our Member Councils to ensure we continue to offer value for money.

We will maintain and enhance our services by working collaboratively with NALC, other County Associations and partners.

We will demonstrate our performance through monitoring and reporting.



Comments and Feedback

KALC is recognised as one of the most effective and efficient County Associations in the country. Evidence from the 2020 KALC Survey indicates that Member Councils highly value the services and the support that we provide our Members. This is also supported in the high membership rate of 97% of all councils in Kent and Medway. However, we are not complacent, there are many challenges ahead for KALC and its Member Councils.

We want to hear from our Members and Partners and welcome comments on how we can continue to improve.

If Members would like more information on the services that we provide, then please visit our website at www.kentalc.gov.uk.

If you are a Chairman, Clerk or Councillor from a Member Council without access to the Members' Section of the KALC website, please e-mail manager@kentalc.gov.uk.



KALC STRUCTURE

